

SUMMARY OF BRIDGE QUANTITIES CODE NO. X-032

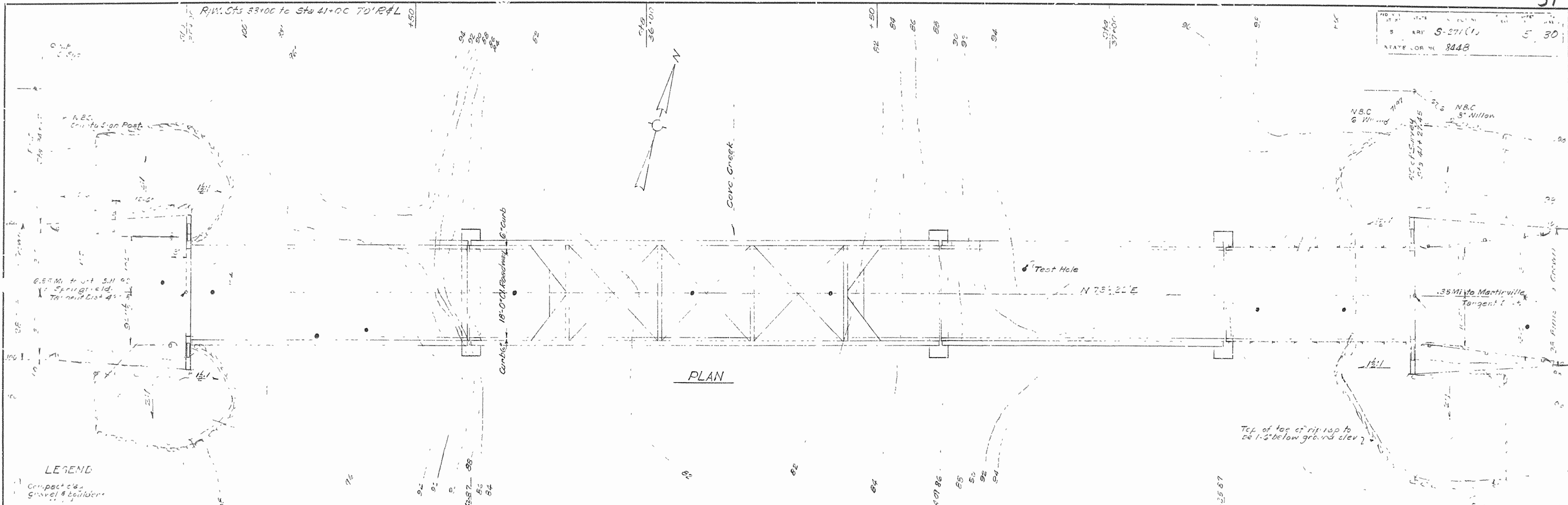
ITEM NO.	ITEM	UNIT	BENT NO. 1.	PIER NO. 1	PIER NO. 2	PIER NO. 3	BENT NO. 2	SPAN NO. 1	SPAN NO. 2	SPAN NO. 3	SPAN NO. 4	BRIDGE TOTAL
SP401-2	NET EXCAVATION FOR STRUCTURES	CU. YD.	39			11	32					82
SP401-3	WET EXCAVATION FOR STRUCTURES	CU. YD.		11	34	114						159
SP401-2	SOLID ROCK EXCAVATION FOR STRUCTURES	CU. YD.		24	25	16						65
SP401-1	CLASS A CONCRETE FOR BRIDGES	CU. YD.		69.25	69.19	63.96						202.40
SP401-2	CLASS S CONCRETE FOR BRIDGES	CU. YD.	12.72				10.94	26.80	41.24	36.97	16.33	135.00
SP401-3	REINFORCING STEEL	LB.	1665	4380	4380	4125	1444	5902	5660	5402	2887	36,350
SP401-7	STRUCTURAL STEEL IN TRUSS SPANS	LB.	469					660	3992	1319		6,440
SP401-7	STRUCTURAL STEEL IN BEAM SPANS	LB.					441				839	1,280
SP501-7	STEEL BEARING PILING (12"BP53)	LIN. FT.	180				154					334
909	RIP RAP	CU. YD.	72				73					145
929	BRIDGE NAME PLATES (TYPE C)	EACH	1									1
SP	ERECTION OF STRUCTURAL STEEL FURNISHED BY THE STATE	COMP. ITEM.										100%

BRIDGE NAME PLATE TITLE - COVE CREEK

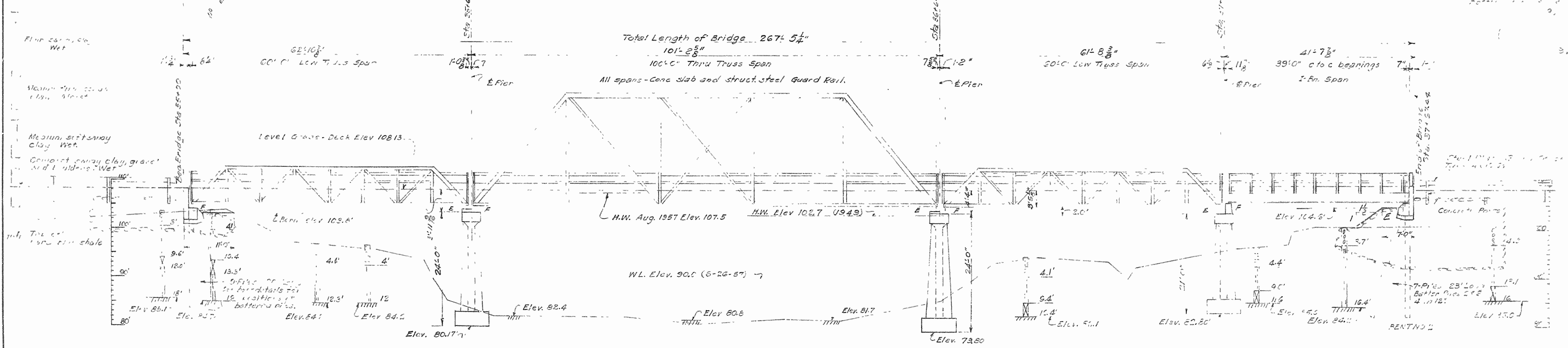
SUMMARY OF QUANTITIES
 BRIDGE OVER COVE CREEK
 CONWAY COUNTY
 ROUTE 124 SEC. 5
 ARKANSAS STATE HIGHWAY COMMISSION
 LITTLE ROCK, ARK.

DRAWN BY: M.E.V. DATE: 9-13-57
 TRACED BY: _____ DATE: _____
 CHECKER BY: ERB DATE: 9-27-57
 BRIDGE NO. 3140 DRAWING NO. 9471

L.P. Johnson
 BRIDGE DESIGN ENGINEER



PLAN



ELEVATION

GENERAL NOTES:

1. Nail in side of 24" white oak 15' Lt. Sta. 35+21 Elev. 100.0' assumed.

2. Detail of substructure see drawings, Nos. 9473 & 9474.

3. Detail of superstructure see drawings, No. 9475.

4. All bolts shall be 12" BP 53 driven to refusal or to a minimum depth of 2 feet into the material designated on drawings. Minimum bearing capacity of 36 tons. Order list is shown. Payment for work on bolts shall be necessary to be in accordance with SP 507-7.

5. All bolts shall be driven after embankment is in place.

6. New Note Specifications:

Arkansas State Highway Commission Standard Specifications for Road and Bridge Construction, Adopted March 1, 1940.

Loading: H-15 A.A.S.H.O. 1953.

Materials:

Class B Concrete (n=10)	1200#/cu yd
Class A Concrete (n=15)	340#/cu yd
Structural Steel	27,000#/cu yd
Structural steel	18,000#/cu yd

NOTE:

The existing detour bridge approximately 150 feet downstream from the proposed new bridge will be maintained and removed by the State.

LAYOUT OF
BRIDGE OVER COVE CREEK
CONWAY COUNTY
ROUTE 124 SEC. 5
ARKANSAS STATE HIGHWAY COMMISSION
LITTLE ROCK, ARK.

DRAWN BY: M.E.W. DATE: 9-10-31
TRACED BY: DATE: DATE: 9-2-37
CHECKED BY: E.S.I. DATE: 9-2-37
BRIDGE NO. 3140 DRAWING NO. 9472

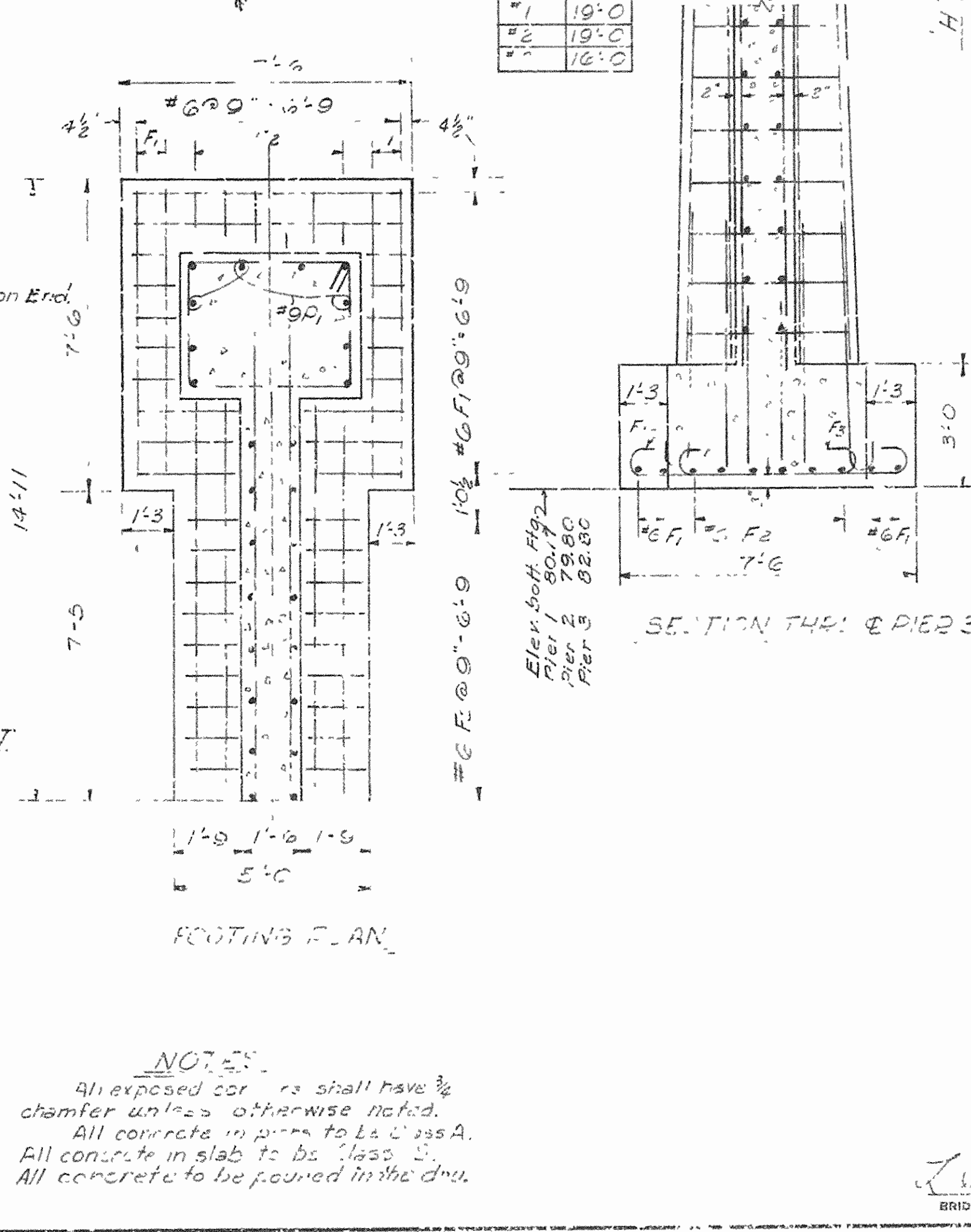
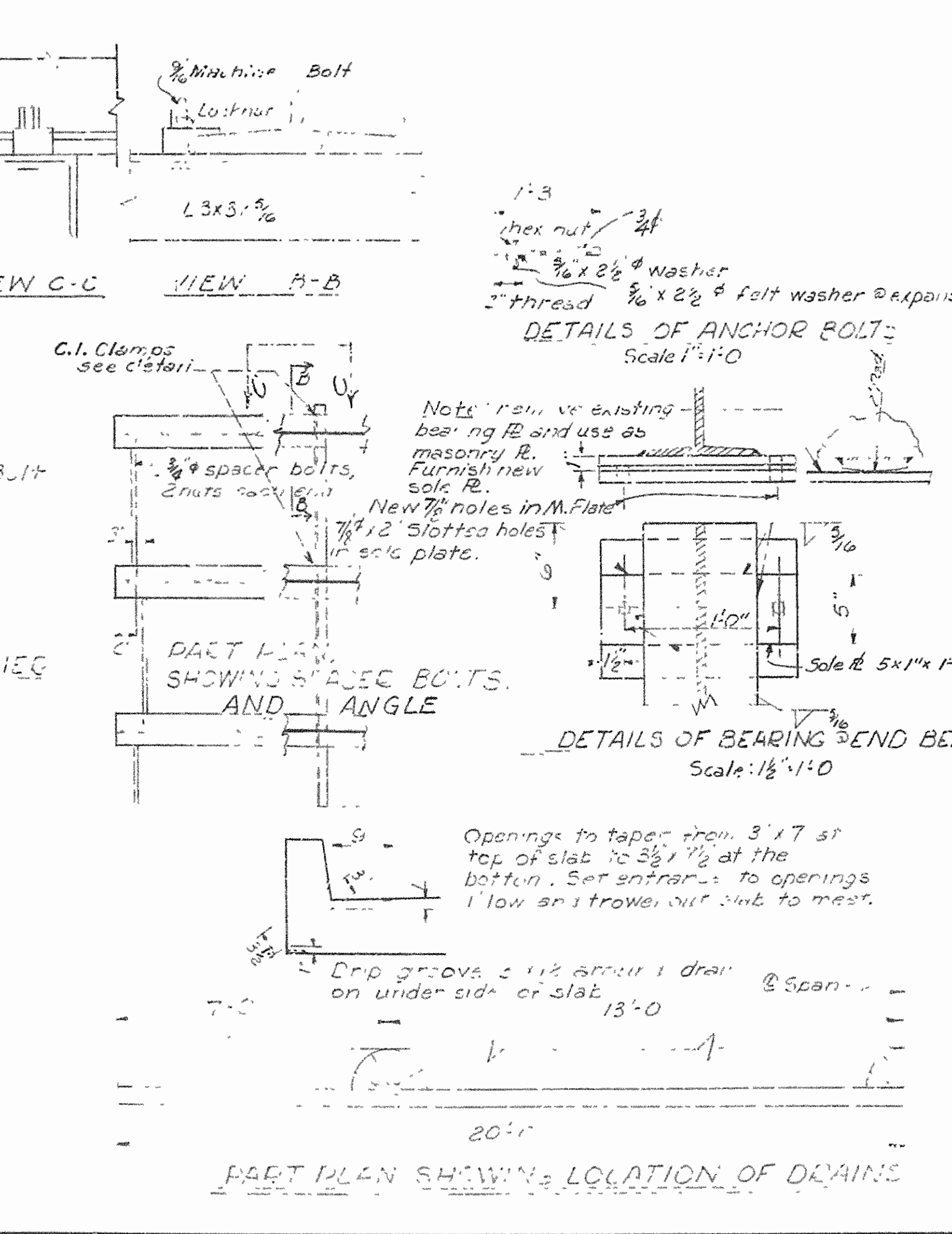
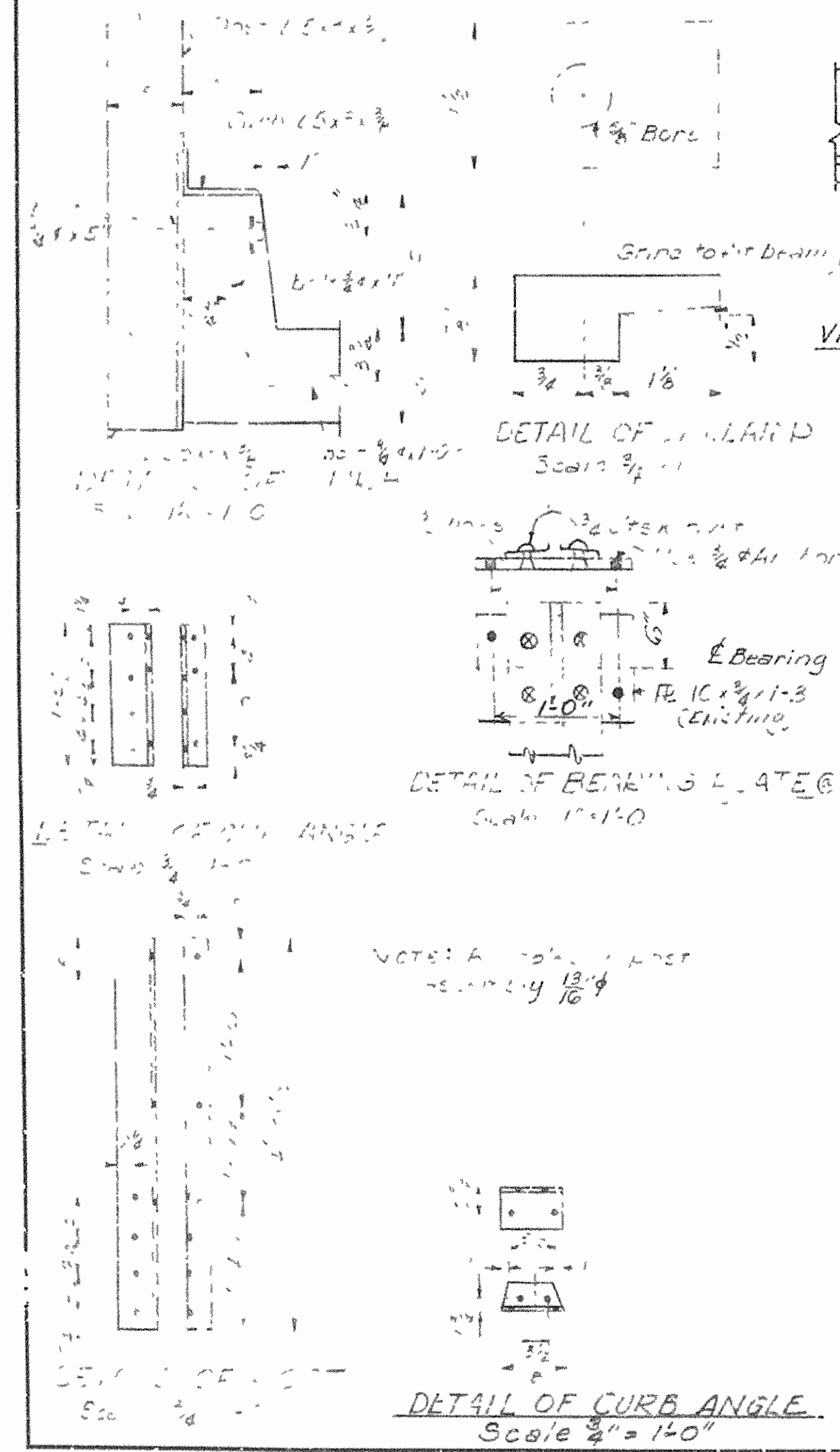
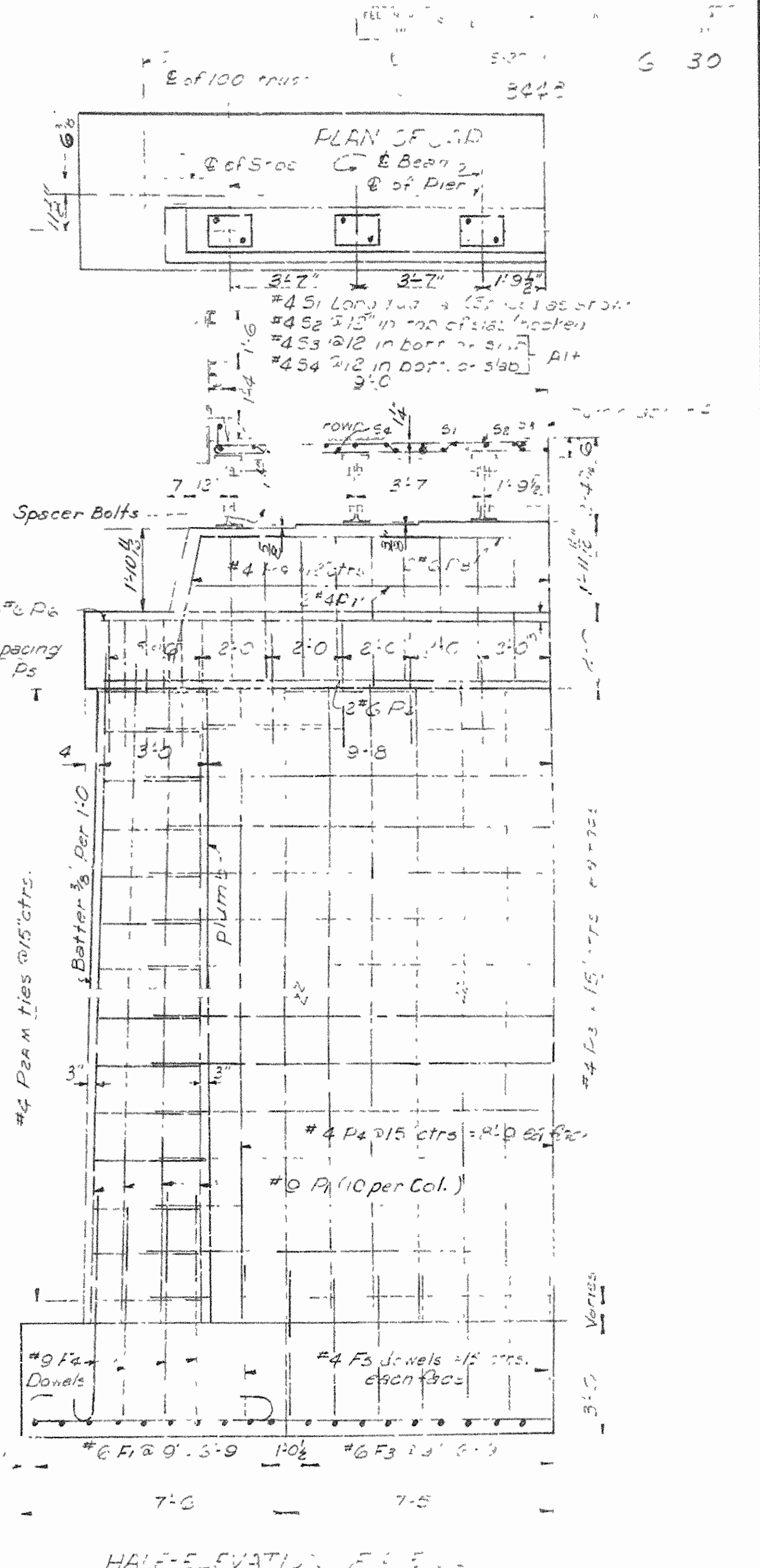
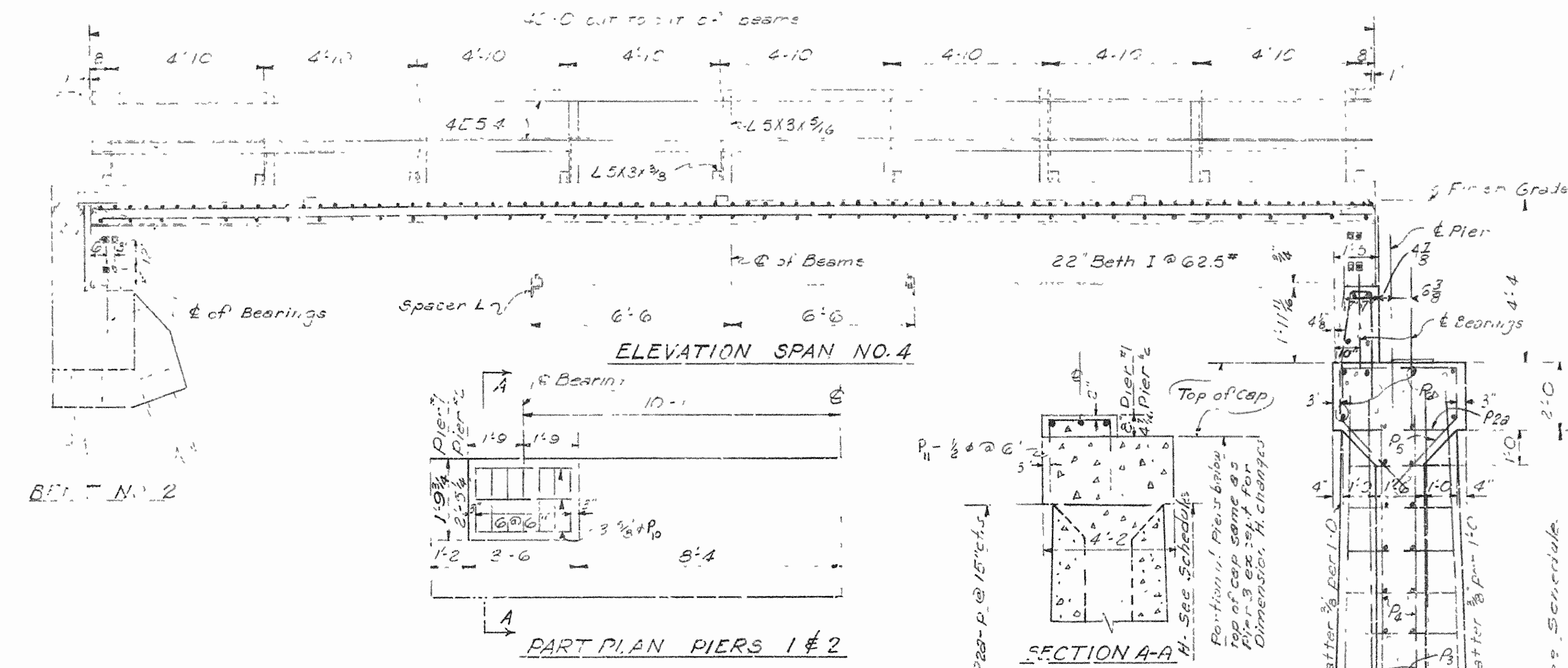
[Signature]
BRIDGE DESIGN ENGINEER

PIERS

PIER	NO.	LENGTH	PIN DIA.
P1	20	20'-9"	5/8"
P2	20	20'-9"	5/8"
P3	20	20'-9"	5/8"
P4	20	20'-9"	5/8"
P5	20	20'-9"	5/8"
P6	20	20'-9"	5/8"
P7	20	20'-9"	5/8"
P8	20	20'-9"	5/8"
P9	20	20'-9"	5/8"
P10	20	20'-9"	5/8"
P11	20	20'-9"	5/8"
P12	20	20'-9"	5/8"
P13	20	20'-9"	5/8"
P14	20	20'-9"	5/8"
P15	20	20'-9"	5/8"
P16	20	20'-9"	5/8"
P17	20	20'-9"	5/8"
P18	20	20'-9"	5/8"
P19	20	20'-9"	5/8"
P20	20	20'-9"	5/8"
P21	20	20'-9"	5/8"
P22	20	20'-9"	5/8"
P23	20	20'-9"	5/8"
P24	20	20'-9"	5/8"
P25	20	20'-9"	5/8"
P26	20	20'-9"	5/8"
P27	20	20'-9"	5/8"
P28	20	20'-9"	5/8"
P29	20	20'-9"	5/8"
P30	20	20'-9"	5/8"
P31	20	20'-9"	5/8"
P32	20	20'-9"	5/8"
P33	20	20'-9"	5/8"
P34	20	20'-9"	5/8"
P35	20	20'-9"	5/8"
P36	20	20'-9"	5/8"
P37	20	20'-9"	5/8"
P38	20	20'-9"	5/8"
P39	20	20'-9"	5/8"
P40	20	20'-9"	5/8"
P41	20	20'-9"	5/8"
P42	20	20'-9"	5/8"
P43	20	20'-9"	5/8"
P44	20	20'-9"	5/8"
P45	20	20'-9"	5/8"
P46	20	20'-9"	5/8"
P47	20	20'-9"	5/8"
P48	20	20'-9"	5/8"
P49	20	20'-9"	5/8"
P50	20	20'-9"	5/8"

SPACING

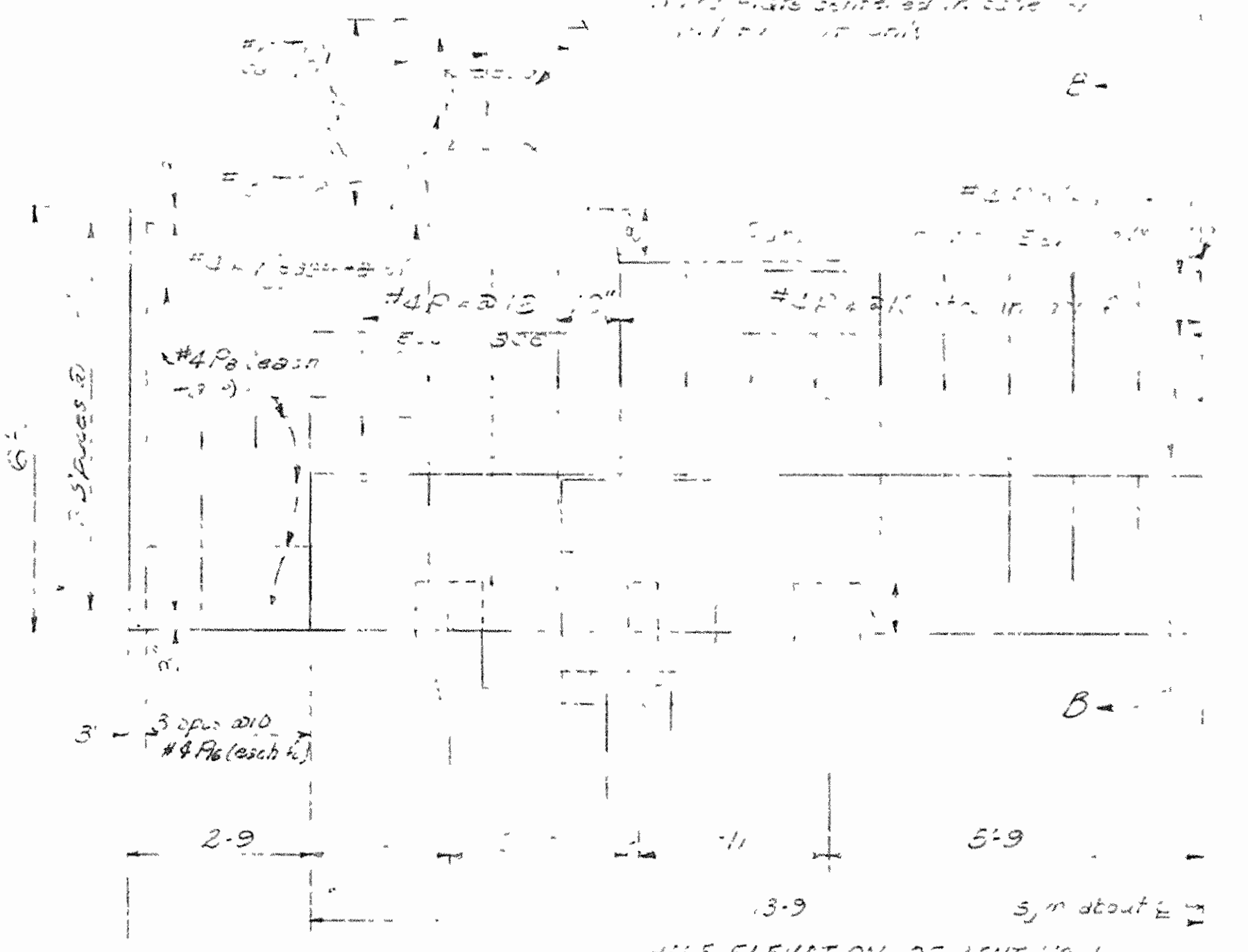
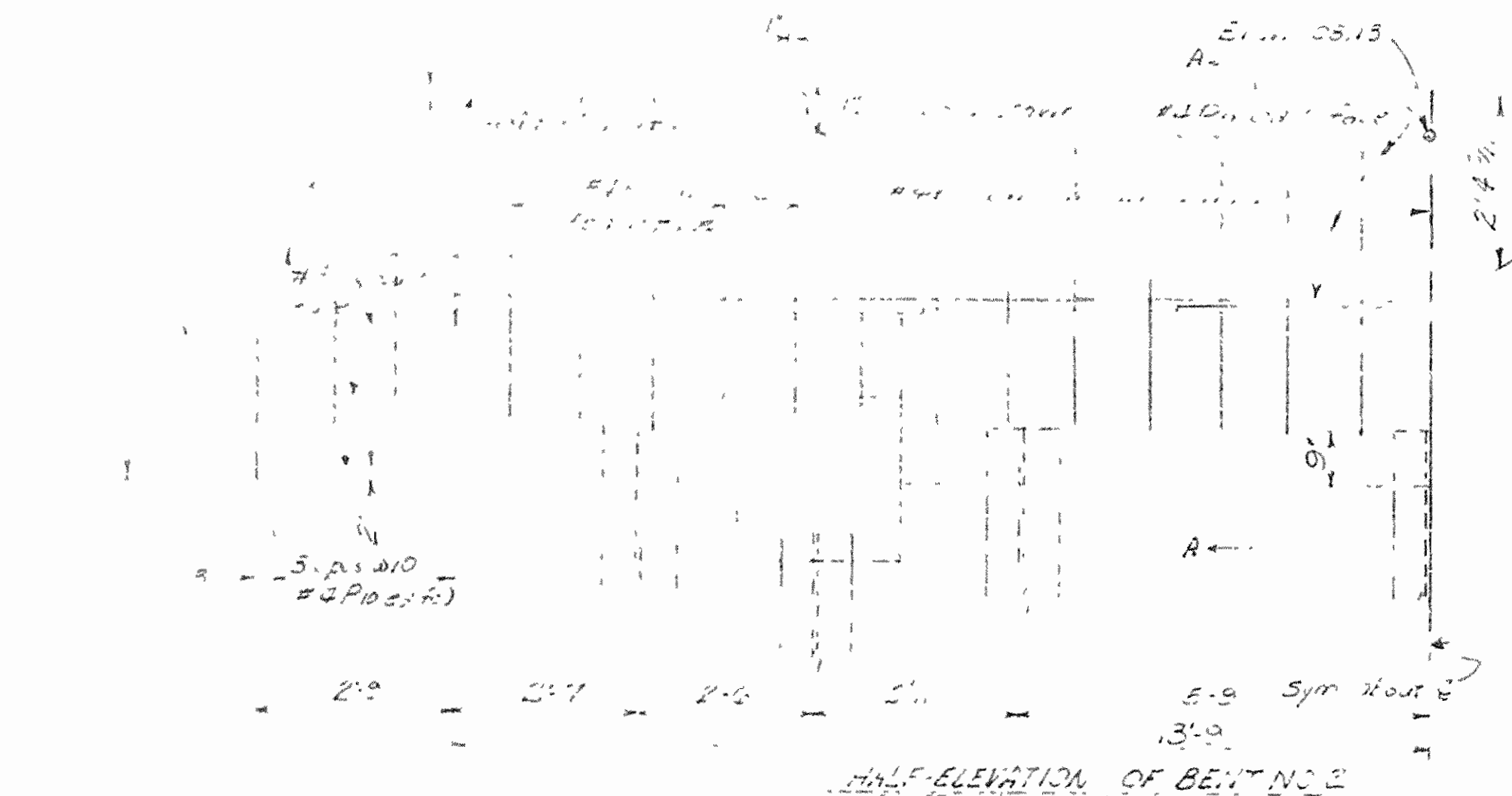
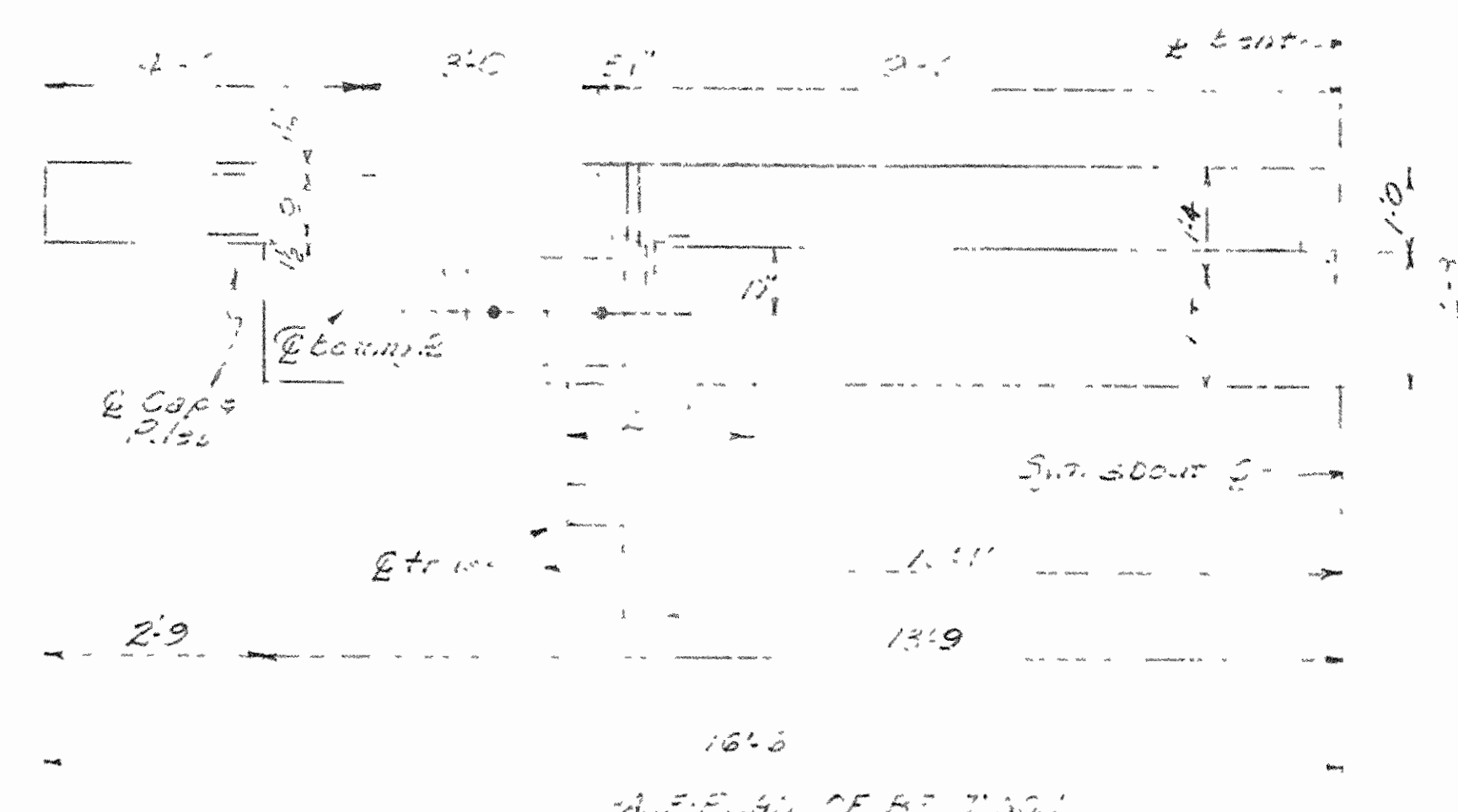
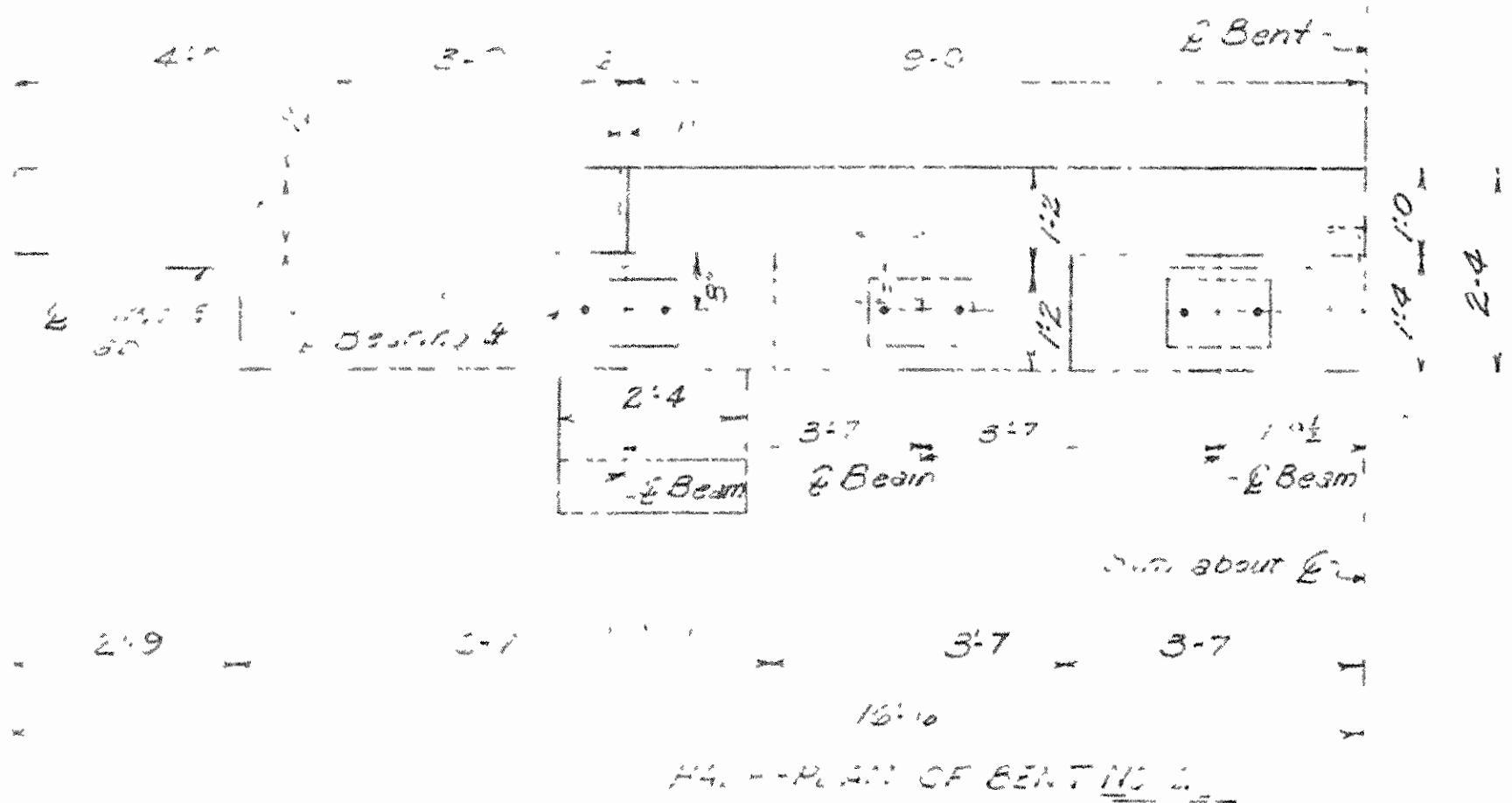
PIER	NO.	LENGTH	PIN DIA.
P1	20	20'-9"	5/8"
P2	20	20'-9"	5/8"
P3	20	20'-9"	5/8"
P4	20	20'-9"	5/8"
P5	20	20'-9"	5/8"
P6	20	20'-9"	5/8"
P7	20	20'-9"	5/8"
P8	20	20'-9"	5/8"
P9	20	20'-9"	5/8"
P10	20	20'-9"	5/8"
P11	20	20'-9"	5/8"
P12	20	20'-9"	5/8"
P13	20	20'-9"	5/8"
P14	20	20'-9"	5/8"
P15	20	20'-9"	5/8"
P16	20	20'-9"	5/8"
P17	20	20'-9"	5/8"
P18	20	20'-9"	5/8"
P19	20	20'-9"	5/8"
P20	20	20'-9"	5/8"
P21	20	20'-9"	5/8"
P22	20	20'-9"	5/8"
P23	20	20'-9"	5/8"
P24	20	20'-9"	5/8"
P25	20	20'-9"	5/8"
P26	20	20'-9"	5/8"
P27	20	20'-9"	5/8"
P28	20	20'-9"	5/8"
P29	20	20'-9"	5/8"
P30	20	20'-9"	5/8"
P31	20	20'-9"	5/8"
P32	20	20'-9"	5/8"
P33	20	20'-9"	5/8"
P34	20	20'-9"	5/8"
P35	20	20'-9"	5/8"
P36	20	20'-9"	5/8"
P37	20	20'-9"	5/8"
P38	20	20'-9"	5/8"
P39	20	20'-9"	5/8"
P40	20	20'-9"	5/8"
P41	20	20'-9"	5/8"
P42	20	20'-9"	5/8"
P43	20	20'-9"	5/8"
P44	20	20'-9"	5/8"
P45	20	20'-9"	5/8"
P46	20	20'-9"	5/8"
P47	20	20'-9"	5/8"
P48	20	20'-9"	5/8"
P49	20	20'-9"	5/8"
P50	20	20'-9"	5/8"



DETAILS OF PIERS AND I-BEAM SPAN
BRIDGE OVER COVE CREEK
CONWAY COUNTY
ROUTE 124 SEC. 5
ARKANSAS STATE HIGHWAY COMMISSION
LITTLE ROCK, ARK.

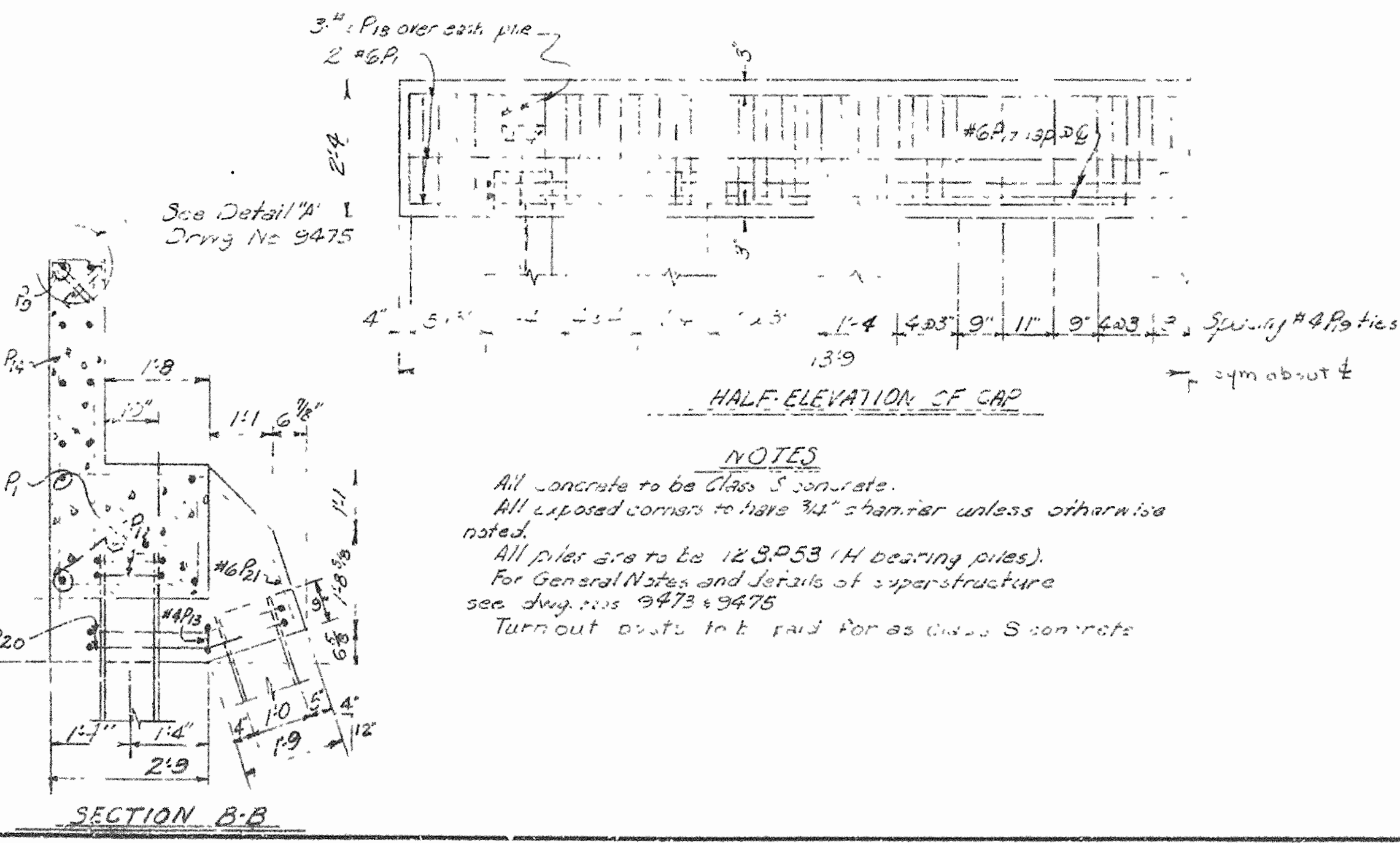
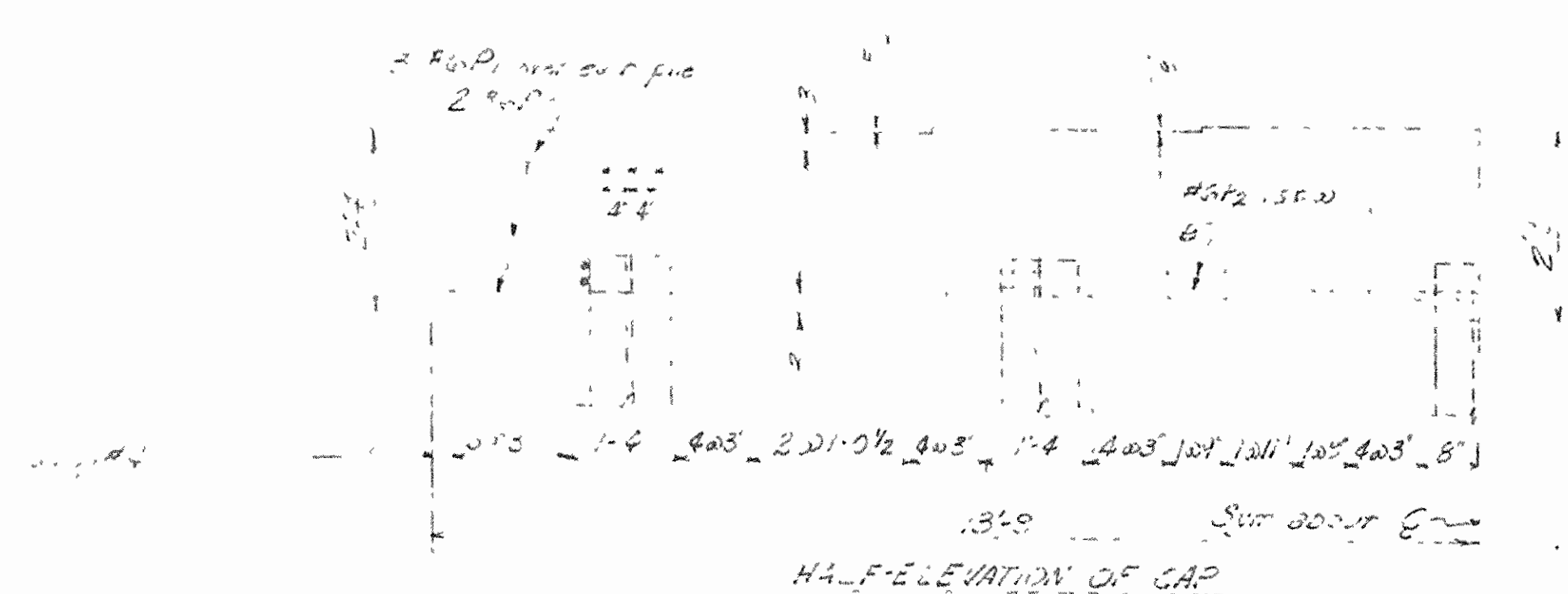
NOTES:
All exposed corners shall have 1/4 chamfer unless otherwise noted.
All concrete in piers to be Class A.
All concrete in slab to be Class B.
All concrete to be poured in the dry.

BRIDGE NO. 3140 DRAWING NO. 9473



BAR LIST FOR BENTS NO 1 & 2

No.	SIZE	REMARKS	LENGTH	BAR NO.	BENT NO. DRAWING
1	#4		27'-2"	S	13'-2"
2	#4		27'-2"	S	13'-2"
3	#4		15'-0"	S	13'-2"
4	#4		3'-0"	S	13'-2"
5	#4		3'-0"	S	13'-2"
6	#4		3'-0"	S	13'-2"
7	#4		3'-0"	S	13'-2"
8	#4		3'-0"	S	13'-2"
9	#4		3'-0"	S	13'-2"
10	#4		3'-0"	S	13'-2"
11	#4		3'-0"	S	13'-2"
12	#4		3'-0"	S	13'-2"
13	#4		3'-0"	S	13'-2"
14	#4		3'-0"	S	13'-2"
15	#4		3'-0"	S	13'-2"
16	#4		3'-0"	S	13'-2"
17	#4		3'-0"	S	13'-2"
18	#4		3'-0"	S	13'-2"
19	#4		3'-0"	S	13'-2"
20	#4		3'-0"	S	13'-2"
21	#4		3'-0"	S	13'-2"
22	#4		3'-0"	S	13'-2"
23	#4		3'-0"	S	13'-2"
24	#4		3'-0"	S	13'-2"
25	#4		3'-0"	S	13'-2"
26	#4		3'-0"	S	13'-2"
27	#4		3'-0"	S	13'-2"
28	#4		3'-0"	S	13'-2"
29	#4		3'-0"	S	13'-2"
30	#4		3'-0"	S	13'-2"
31	#4		3'-0"	S	13'-2"
32	#4		3'-0"	S	13'-2"
33	#4		3'-0"	S	13'-2"
34	#4		3'-0"	S	13'-2"
35	#4		3'-0"	S	13'-2"
36	#4		3'-0"	S	13'-2"
37	#4		3'-0"	S	13'-2"
38	#4		3'-0"	S	13'-2"
39	#4		3'-0"	S	13'-2"
40	#4		3'-0"	S	13'-2"
41	#4		3'-0"	S	13'-2"
42	#4		3'-0"	S	13'-2"



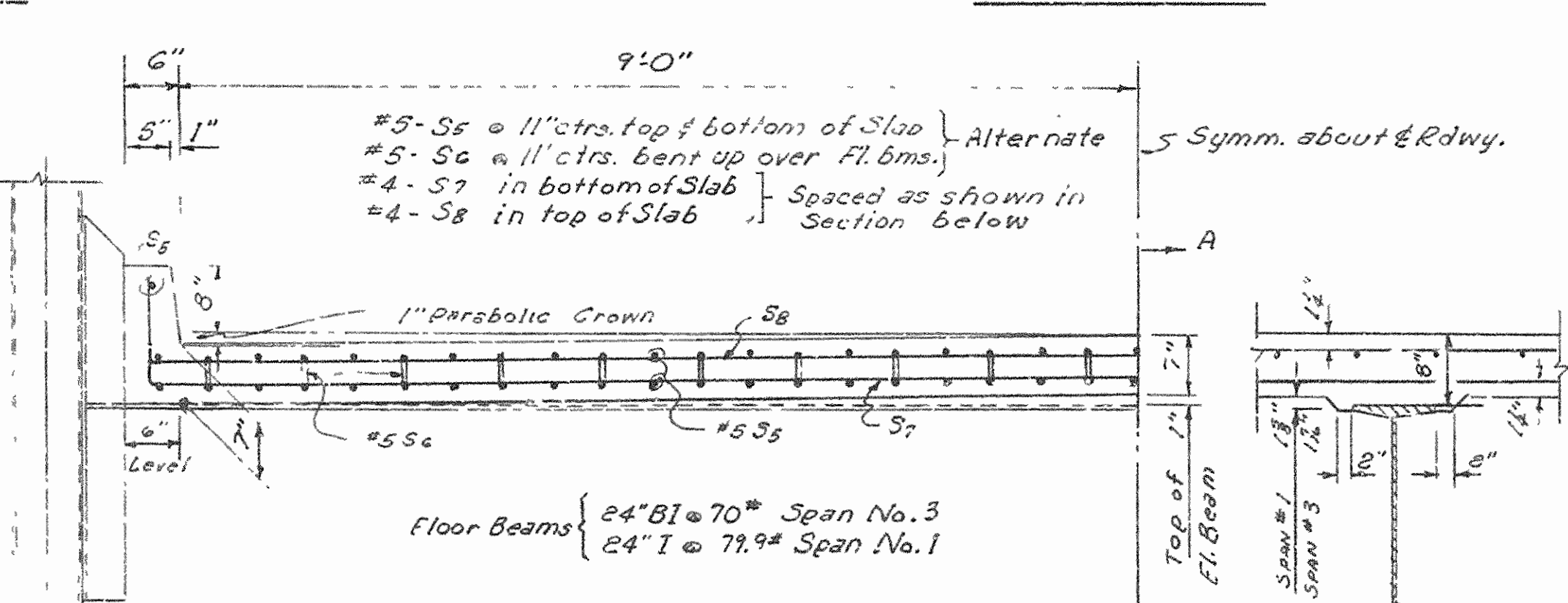
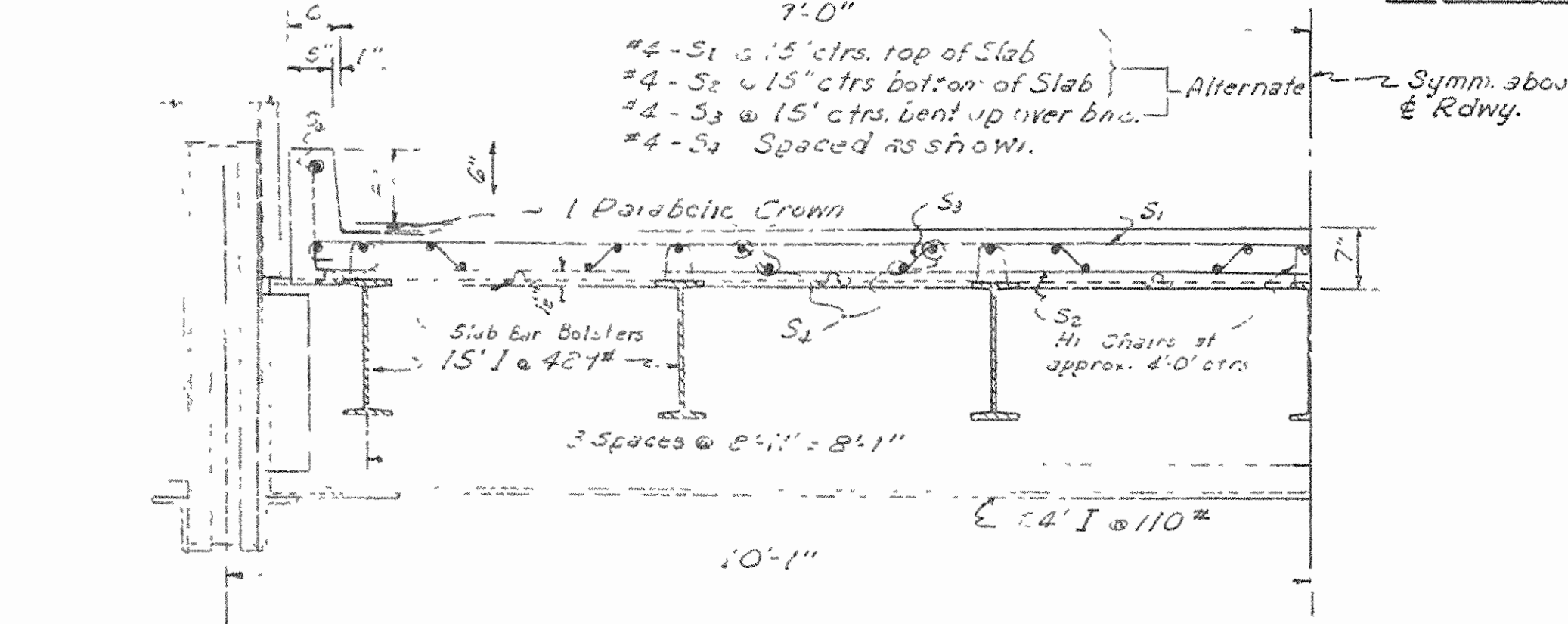
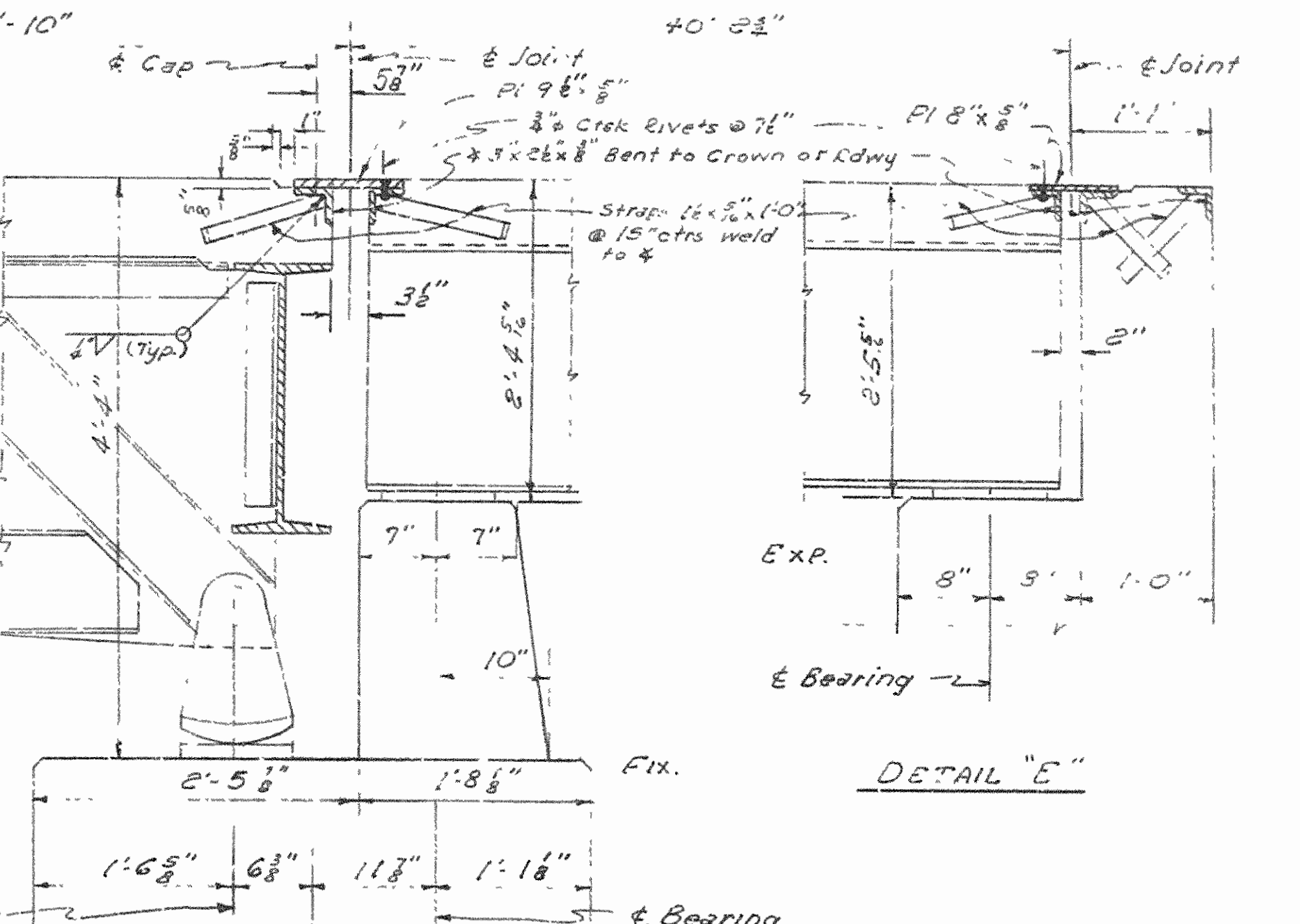
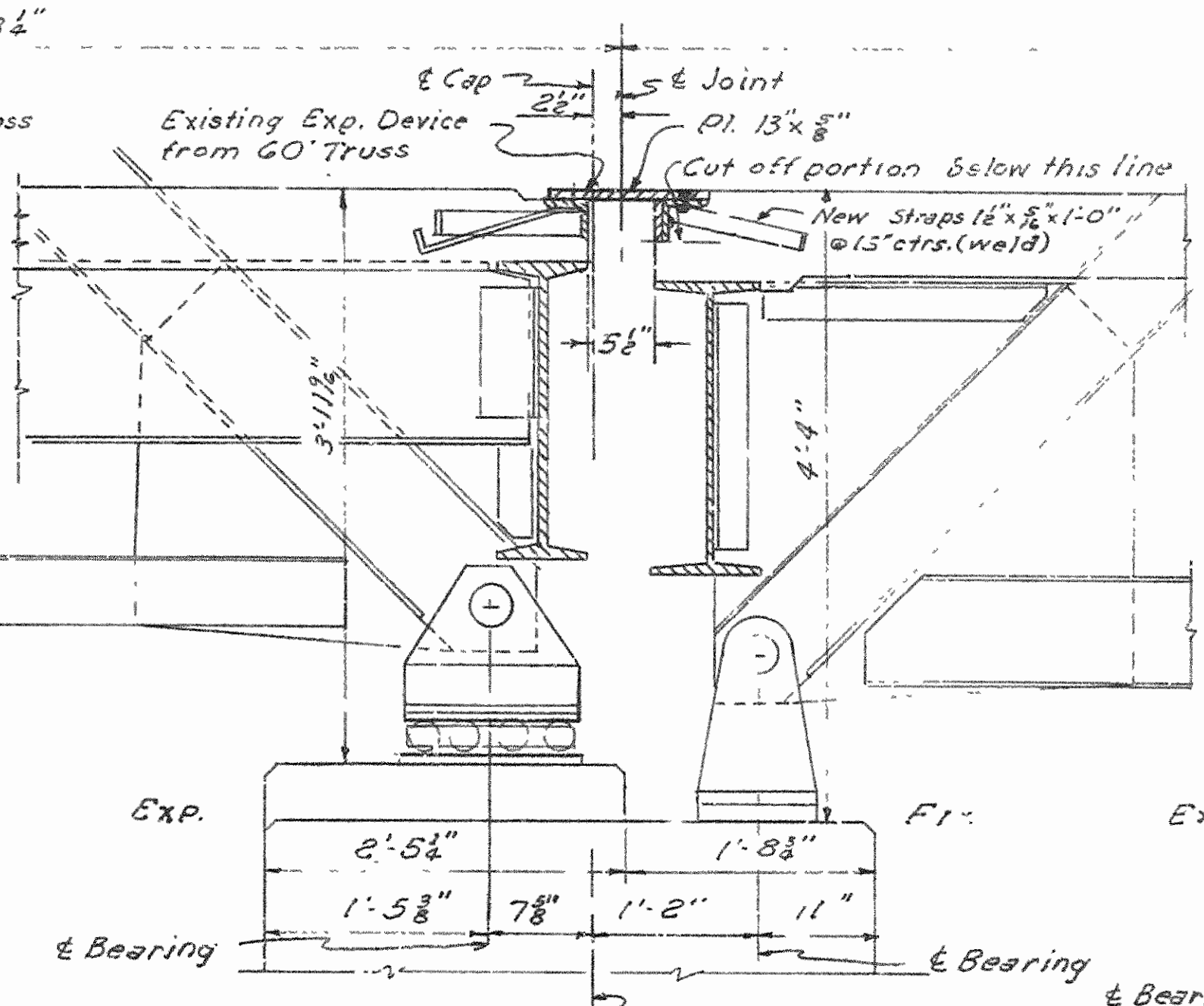
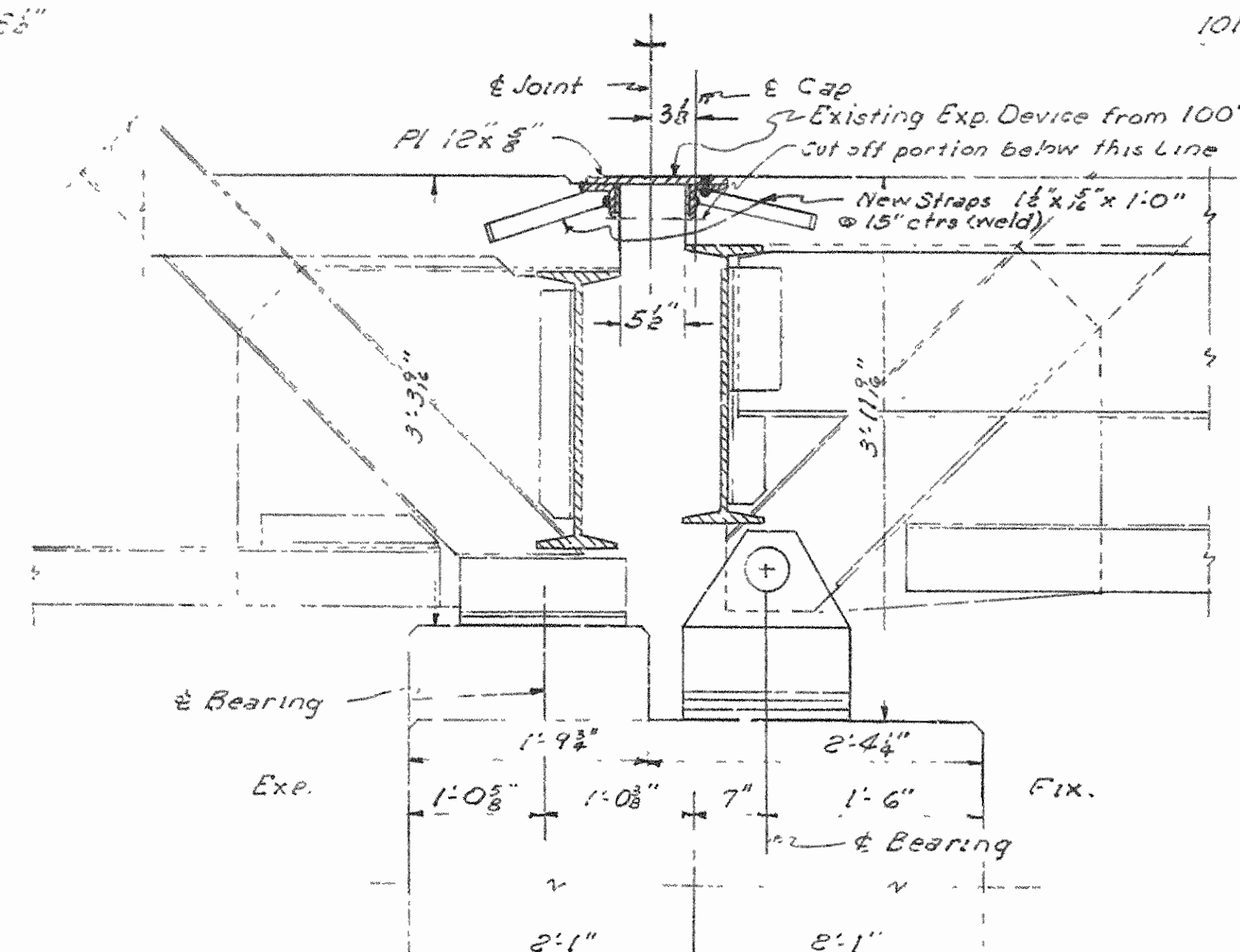
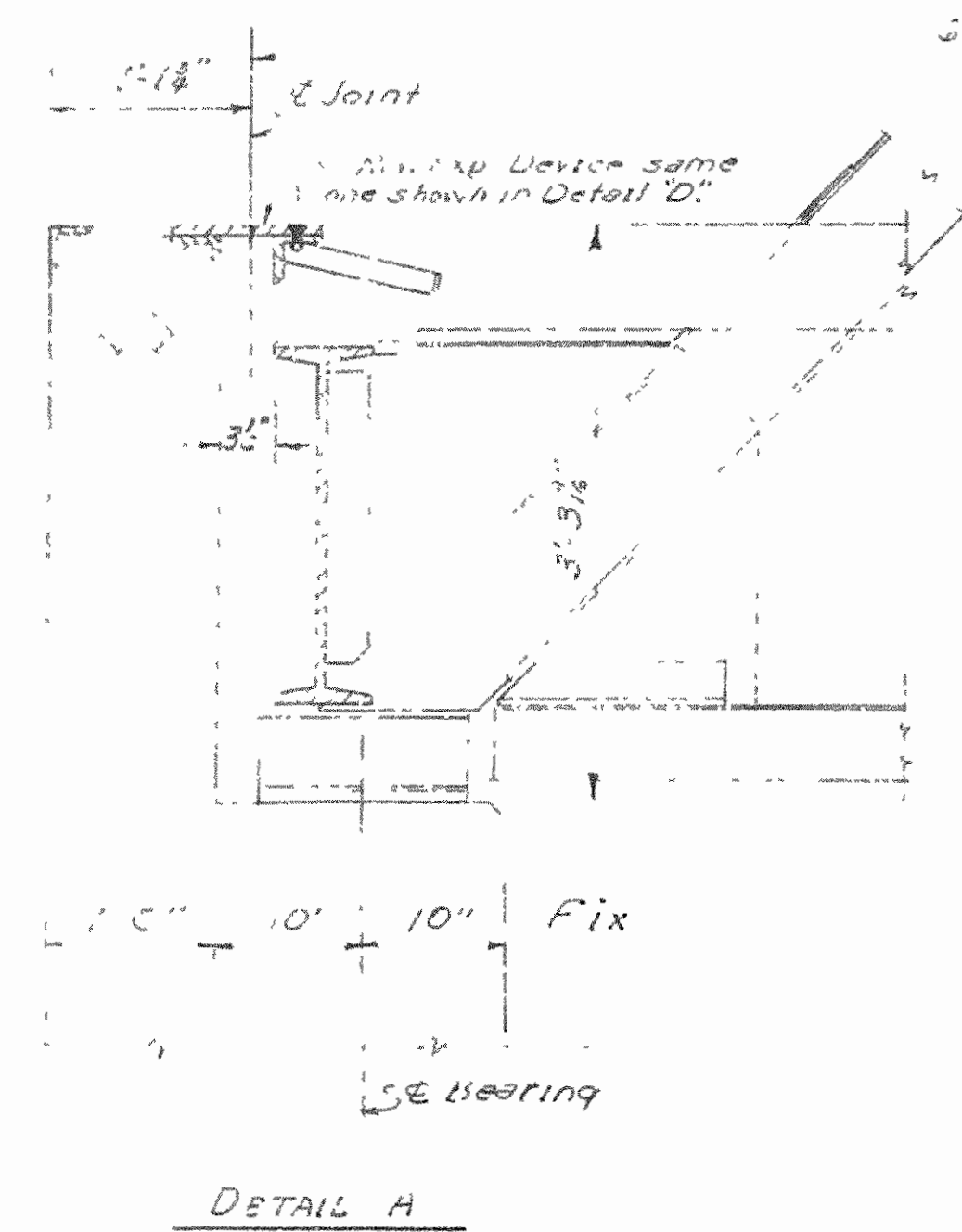
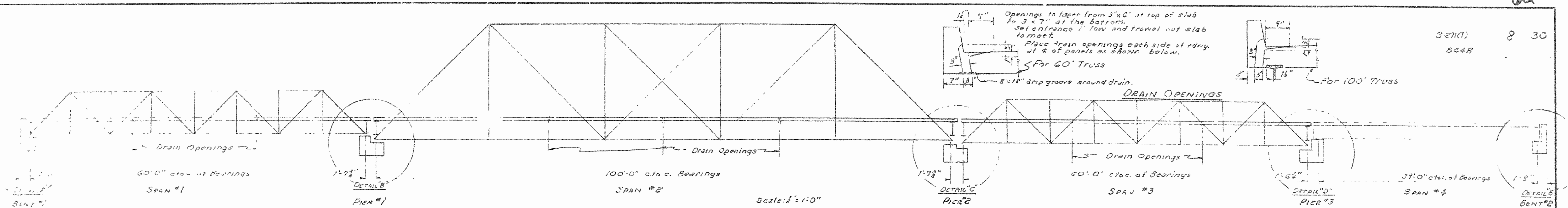
NOTES

- All concrete to be Class 5 concrete.
- All exposed corners to have 3/4" chamfer unless otherwise noted.
- All piles are to be 12" 3P58 (H bearing piles).
- For General Notes and Details of superstructure see dwg nos 9473 & 9475.
- Turnout costs to be paid for as Class 5 concrete.

DETAIL OF END BENTS
BRIDGE OVER COVE CREEK
CONWAY COUNTY
ROUTE 124 SEC 5
ARKANSAS STATE HIGHWAY COMMISSION
LITTLE ROCK, ARK

DRAWN BY: [Signature] DATE: []
TRACED BY: [] DATE: [] SCALE: 1/2" = 1'-0"
CHECKED BY: J.E.M. DATE: 9-30-57
BRIDGE NO. 3140 DRAWING NO. 9474

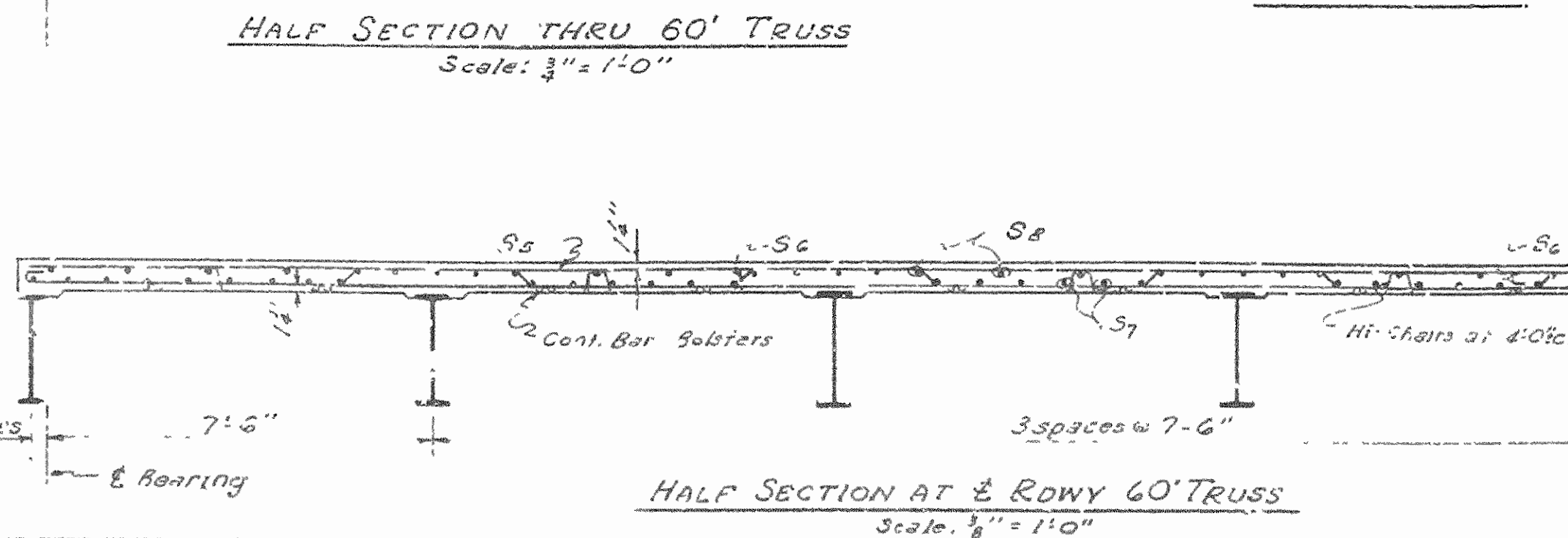
L.P. Colton
BRIDGE DESIGN ENGINEER



BAR LIST FOR TRUSS SPANS

NO.	SIZE	LENGTH	FIN DIA.
S1 #1	81	19'-6"	4"
S2 #2	81	20'-3"	11"
S3 #3	80	20'-6"	3"
S4 #4	105	34'-5"	Str.
S5 #5	89	32'-7"	Str.
S6 #6	40	34'-9"	4 1/2"
S7 #7	54	20'-5"	18'-0"
S8 #8	55	20'-9"	18'-0"

Dimensions are to ctrs of bars.



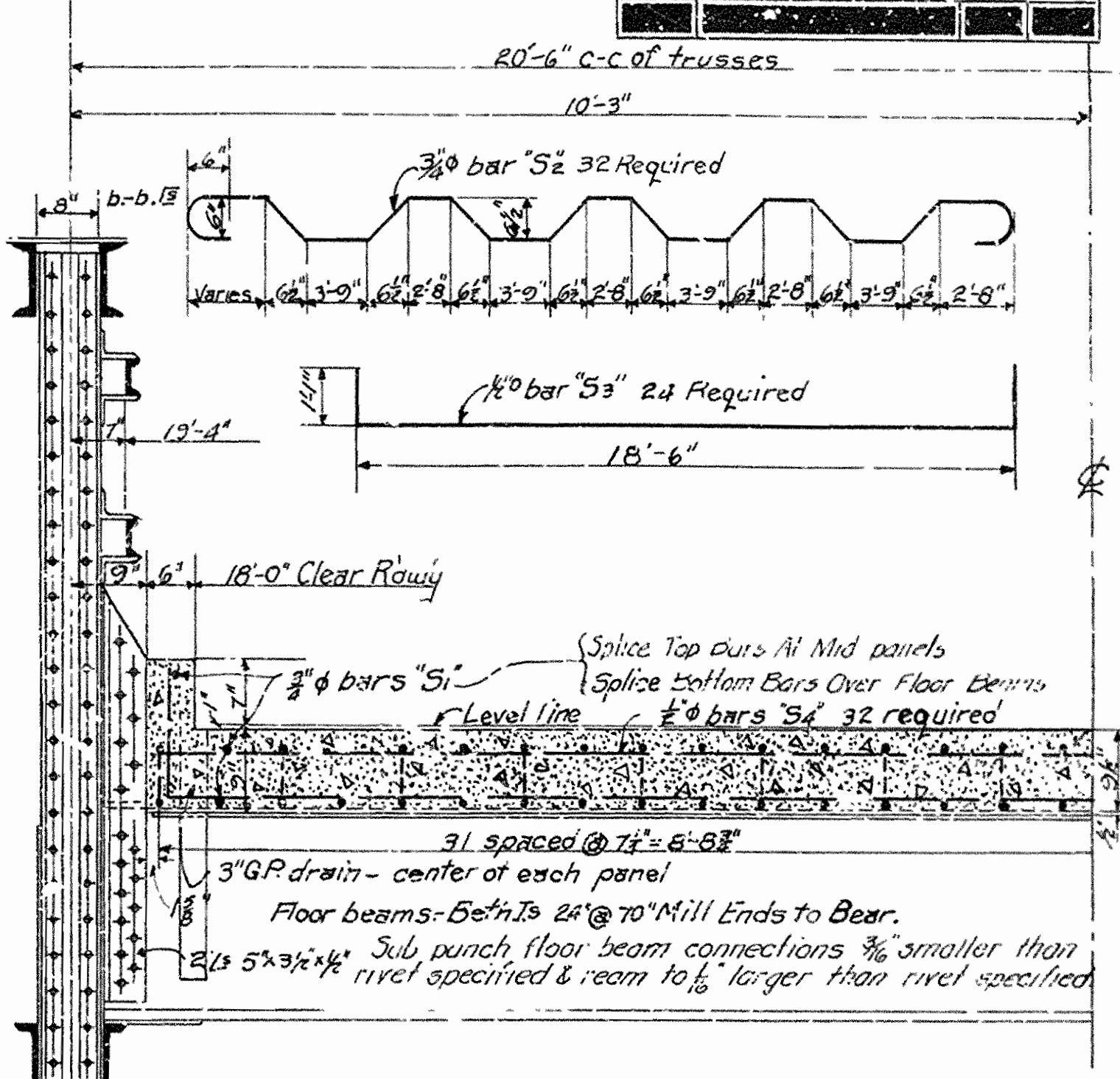
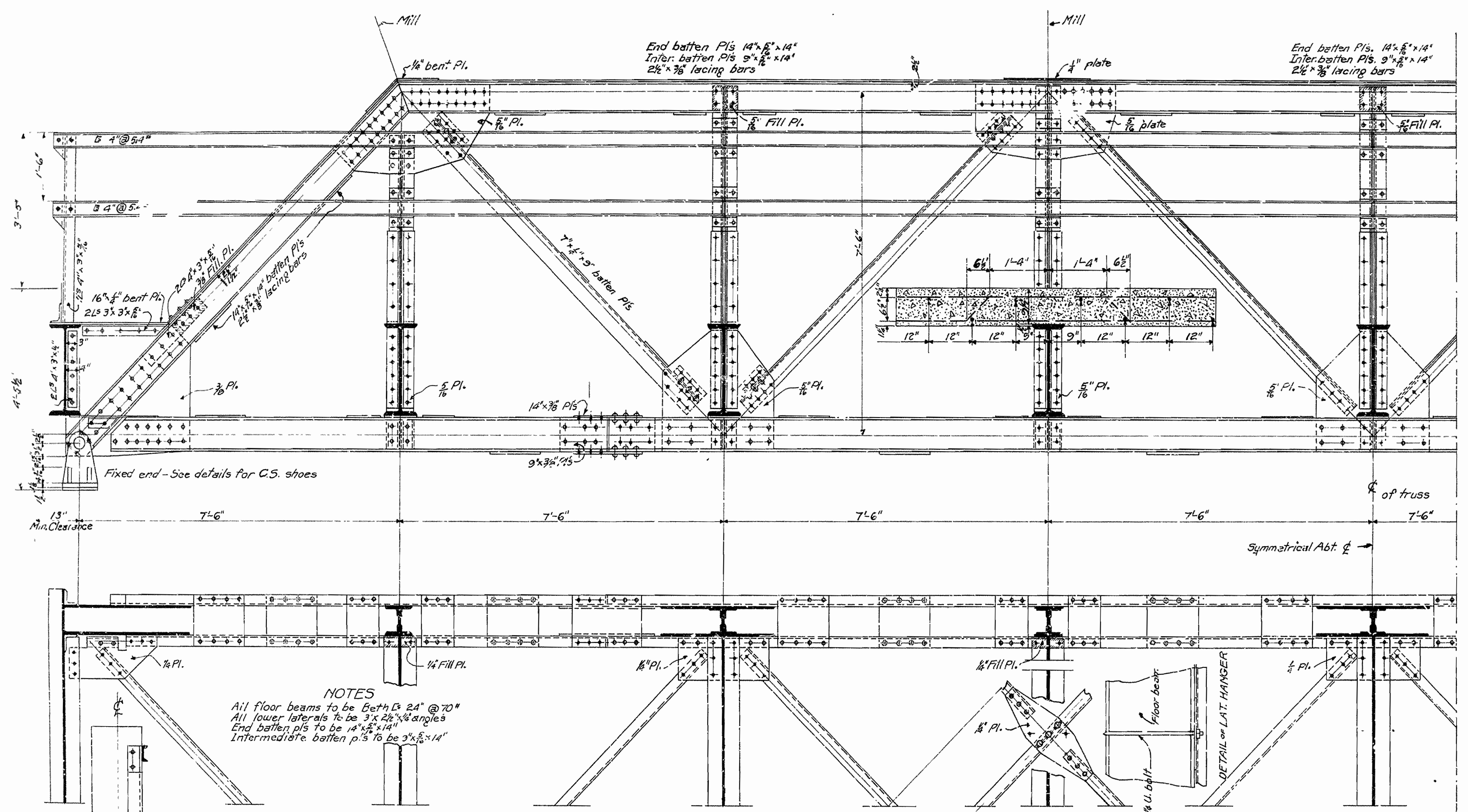
GENERAL NOTES:
 All concrete in slabs to be Class S. All exposed corners to be chamfered 3/4 inches, otherwise noted.
 Reinforcing steel to be deformed bars of intermediate grade. The reinforcing steel is to be accurately located in the forms and firmly held in place by means of steel wire supports, sufficient in size and number to prevent displacement during the course of construction. The wire supports will not be paid for directly, but will be considered subsidiary to the item of "Reinforcing Steel." Shop lists and bending diagrams of reinforcing steel wire supports shall be submitted and approval secured before fabrication is begun.
 All field connections to be 3/4 rivets or high strength bolts.
 Structural Steel in I-Beam Spans & Truss Spans furnished by State see Special Provision for "Erection of Structural Steel Furnished by the State."
 For details of substructure see Drwgs. 9473 & 9474.
 For details of I-Beam Span see Drwg. 9473.

DETAILS OF FLOOR SLABS
 FOR TRUSS SPANS
 BRIDGE OVER COVE CREEK
 CONWAY COUNTY

ROUTE 124 SEC. 5
 ARKANSAS STATE HIGHWAY COMMISSION
 LITTLE ROCK, ARK.
 DRAWN BY F.R.B. DATE 9-12-57
 TRACED BY DATE
 CHECKED BY W.E.M. DATE 9-17-57
 SCALE 1" = 1'-0" OR AS SHOWN
 BRIDGE NO. 3140 DRAWING NO. 9475

L. W. Colson
 BRIDGE DESIGN ENGINEER

FISCAL YEAR	Job No.	SHEET NO.	TOTAL SHEETS



HALF SECTION AT ϕ OF BRIDGE

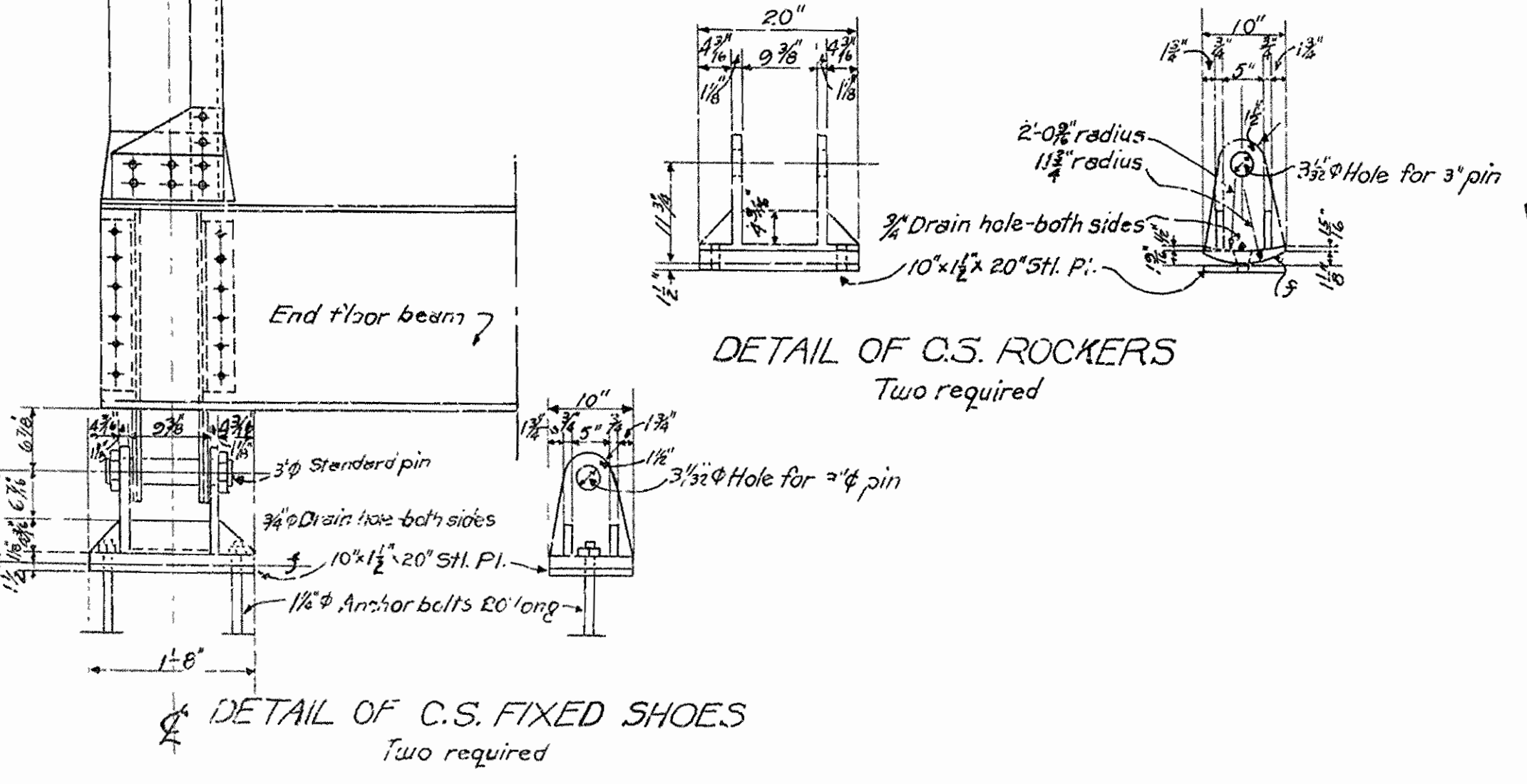
SPECIFICATIONS

14'-0" TOTAL WHEEL LOADS
6'-0" 24,000

Live load uniform - 100 Lbs. per Sq. Ft. Rdwy. Concentrated - 2-15 ton trucks as shown. Impact = 100% L + 300. Unit stresses, Concrete 810 ψ / in. Rein. steel 18,000 ψ / in. Struct. steel 19,000 ψ / in. Rivets to be 3/4" in Diam.

Rivet holes: Sub punch all rivet holes in main truss connections (with shop field) 1/8" larger than rivet specified & ream to 1/4" larger than rivet specified after assembly in shop and match marked. All field connections riveted. Rivet holes in tension members so spaced that only one hole is deducted from each angle at the point of maximum stress. Deduct two Web Holes and one Flange Hole from each channel at point of maximum stress. Shop paint: One coat of "Red Lead" and raw linseed oil. Field paint: Two coats of different color as approved by the Engineer. Batten plates to be spaced not over 3'-0" Ctrs on tension members. Concrete Floor Slab - Class "S" Extra 1" added for wear. Stringers & Floor Beams to be milled to exact length. Members of equal or greater strength may be used in place of members shown here, but payment will be made in accordance with size shown on this plan. This drawing is general only. Shop drawing must be made in compliance with specifications, must be submitted and approved before fabrication begins. Specifications Arkansas State Highway Specifications adopted May 30, 1925 and Revised

NOTES
All floor beams to be Beths 24" @ 70"
All lower laterals to be 3" x 2 1/2" x 1/4" angles
End batten pl's to be 14" x 5" x 1/4"
Intermediate batten pl's to be 9" x 5" x 1/4"



ESTIMATED QUANTITIES
This drawing included in Job No. 5
General information only.
Structural steel with out expansion devices 33,182 Lbs.
Reinforcing steel (outside to outside of End Fl. Bms.) 5,618 Lbs.
Class "S" concrete (outside to outside of End Fl. Bms.) 3576 Cu Yds

5-2-29 Solving Of "S" Bars in Floor Slab & Lateral Lay Angles By Noe
11-13-29 For General Revisions By Noe

STANDARD PLAN
60'-0" LOW TRUSS SPAN
18'-0" CLEAR ROADWAY
ROUTE SEC.
ARKANSAS STATE HIGHWAY DEPARTMENT
LITTLE ROCK, ARK.
Drawn By: N.O.E. Date: _____
Traced By: R.P.B. Date: _____
Checked By: _____ Date: _____
Scale: 3/4" in. 1'-0" ft.
BRIDGE NO. _____ DRAWING NO. 1051

W.B. Lawrence
BRIDGE ENGINEER